

ADDENDUM NO. 1

July 15, 2020

**CITY OF CROSSVILLE TN
GENESIS ROAD NORTH PUMP STATION
GRW Project No. 3671-13**

BID OPENING: July 21, 2020 at 2:00 PM (CST)

Acknowledge receipt of this addendum in the space provided on the bid form. Failure to do so may cause the bid to be unacceptable and rejected.

Make the following changes and corrections to the Project Manual (Contract Documents and Technical Specifications) and drawings:

Contract Documents and Technical Specifications

1. SECTION 43 21 15 – SUBMERSIBLE SEWAGE CHOPPER PUMPS

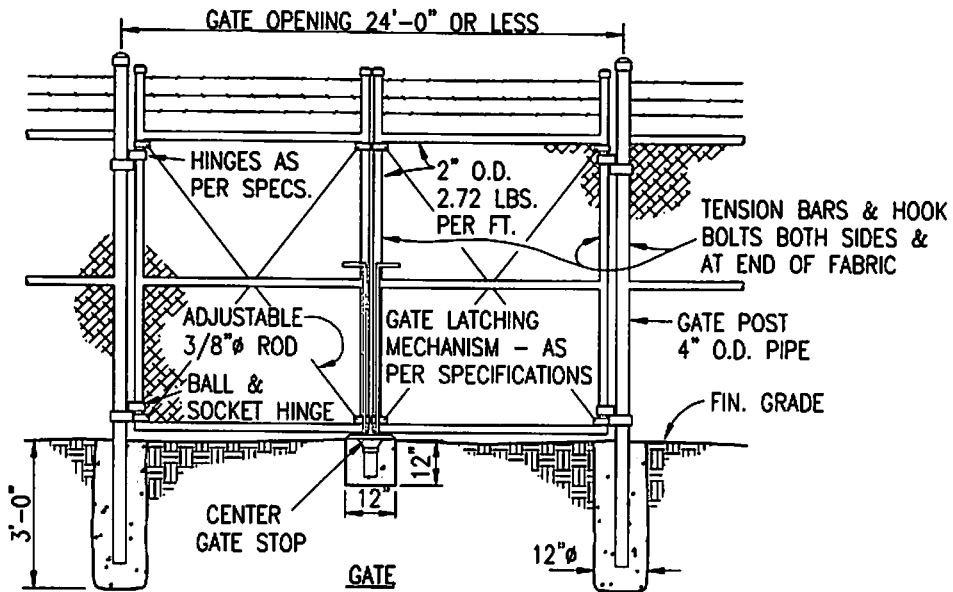
- A. Delete Paragraph 1.5 A Shop Tests.
Manufacturer shall guarantee performance based on published pump curve to within 5%.
- B. Paragraph 1.7 A. Pump Warranty.
Clarification – The pump warranty is not intended to cover routine maintenance such as adjustment of wear plate clearance, pump clogging, or normal wear and tear. The manufacturer's warranty is to repair/replace non-wear components due to defects in material or workmanship.
- C. Paragraph 2.2 A. Operating Conditions shall be revised to be; 150 GPM @ 95' TDH.
- D. Paragraph 2.2 D. Voltage Available At Site – and as listed on existing pump panels, 230V/3ph.
- E. Paragraph 2.8 A Pump Retrieval System.
The following lifting system shall be allowed; Lifting Cable and Bail: Type 316 stainless steel chain of sufficient length to extend from the pump in the lowest position in the wet well to the connection with a crane on the top of the wet well. Provide a Type 316 stainless steel device at the top of the wet well to attach the chain to when not in use.

2. FENCE – DETAIL ATTACHED.

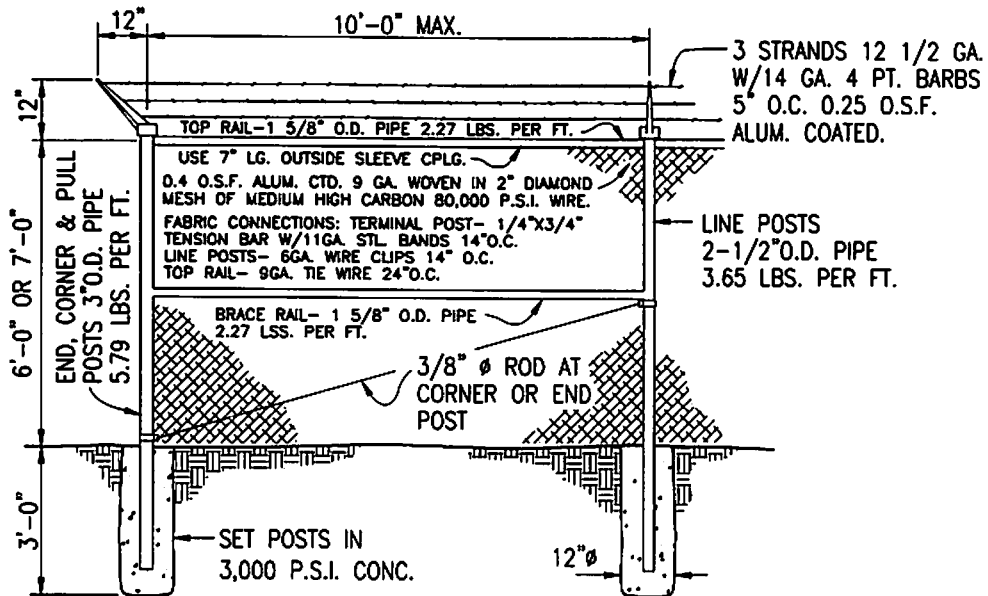
END OF ADDENDUM NO. 1



Jim Hilborn, PE
License No. 16514
GRW Engineers, Inc.




ALL POSTS & OTHER APPURTENANCES SHALL BE HOT DIP GALVANIZED W/MIN. 2.0 O.S.F. ZINC. ALL FITTINGS SHALL BE MALLABLE CAST IRON OR PRESSED STEEL.



CHAIN-LINK FENCE DETAIL

NOT TO SCALE

GRW PROJECT NO. 3671-13				DESIGNED JWH	CHAIN-LINK FENCE STANDARD DETAIL GENESIS NORTH PUMP STATION CITY OF CROSSVILLE, TENNESSEE	 engineering architecture geospatial www.gwinc.com	DATE JULY 2020
REVISIONS				DRAWN DM			SCALE AS NOTED
NO.	DESCRIPTION	DATE	BY	REVIEWED JWH			SHEET NO.
				APPROVED JWH			1 of 1
SCALE CHECK: THIS BARY SHOULD MEASURE EXACTLY 1/2" INCH PLOTTER							

ALL RIGHTS RESERVED. THIS DOCUMENT IS THE PROPERTY OF GRW ENGINEERS, INC. AND SHALL NOT BE REPRODUCED IN WHOLE OR IN PART OR USED FOR CONSTRUCTION OF OTHER THAN THIS SPECIFIC PROJECT WITHOUT WRITTEN PERMISSION.